

Conditions for Equilibrium

- In equilibrium, all thermodynamic potentials must be equal in all phases.

$$T^\alpha = T^\beta = \dots = T^\gamma$$

$$P^\alpha = P^\beta = \dots = P^\gamma$$

$$\mu_a^\alpha = \mu_a^\beta = \dots = \mu_a^\gamma$$

$$\mu_b^\alpha = \mu_b^\beta = \dots = \mu_b^\gamma$$

•

•

$$\mu_n^\alpha = \mu_n^\beta = \dots = \mu_n^\gamma$$

Phase Rule

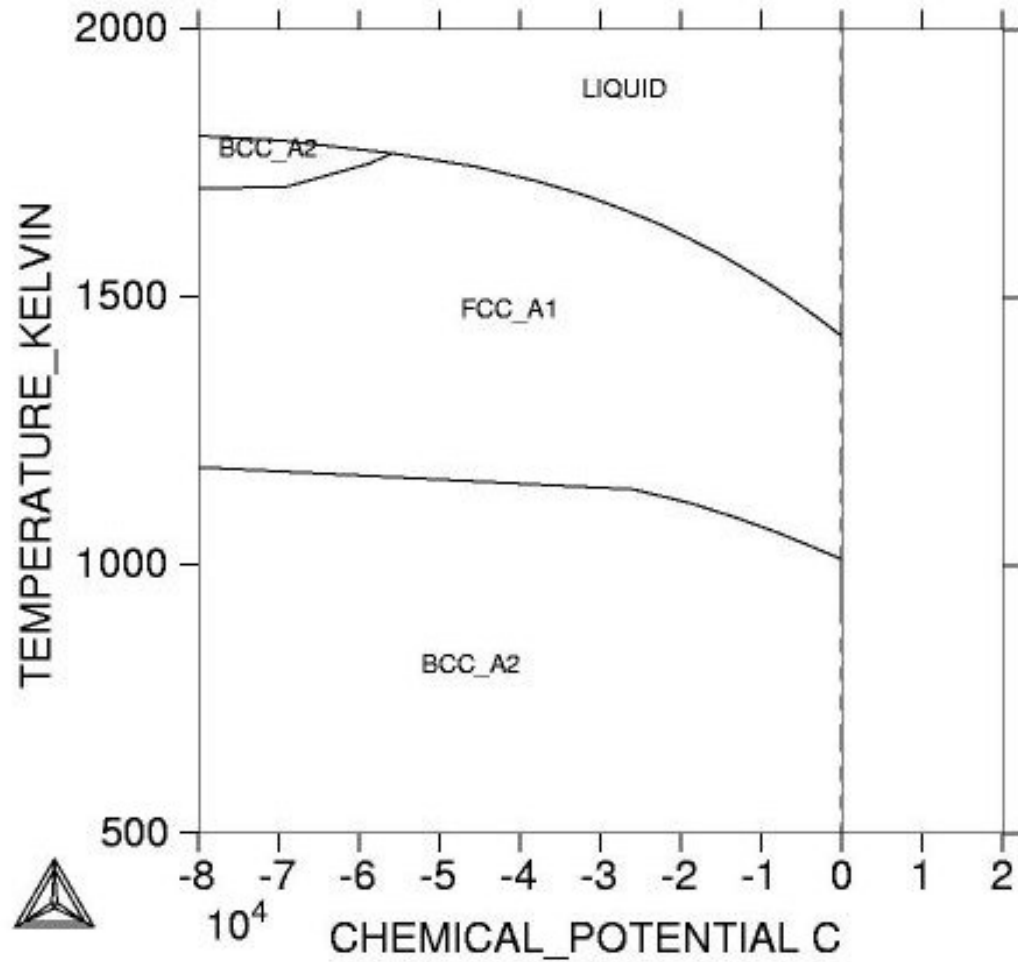
	(P-1) equations	Number of Equations:
	→	$(C+2)(P-1) = CP + 2P - C - 2$
(C+2) lines ↓	$T^\alpha = T^\beta = \dots = T^\gamma$	Number of Variables: (C-1)P composition variables P temperatures P pressures $CP - P + 2P = CP + P$ variables
	$P^\alpha = P^\beta = \dots = P^\gamma$	
	$\mu_a^\alpha = \mu_a^\beta = \dots = \mu_a^\gamma$	
	$\mu_b^\alpha = \mu_b^\beta = \dots = \mu_b^\gamma$	
	.	
.		Variables - Equations = Degrees of Freedom
		$CP + P - (CP - C + 2P - 2) = F$
		$C - P + 2 = F$
		For an extensive system the size is an additional variable
		$C - P + 3 = F$

Diagram Topology (binaries)

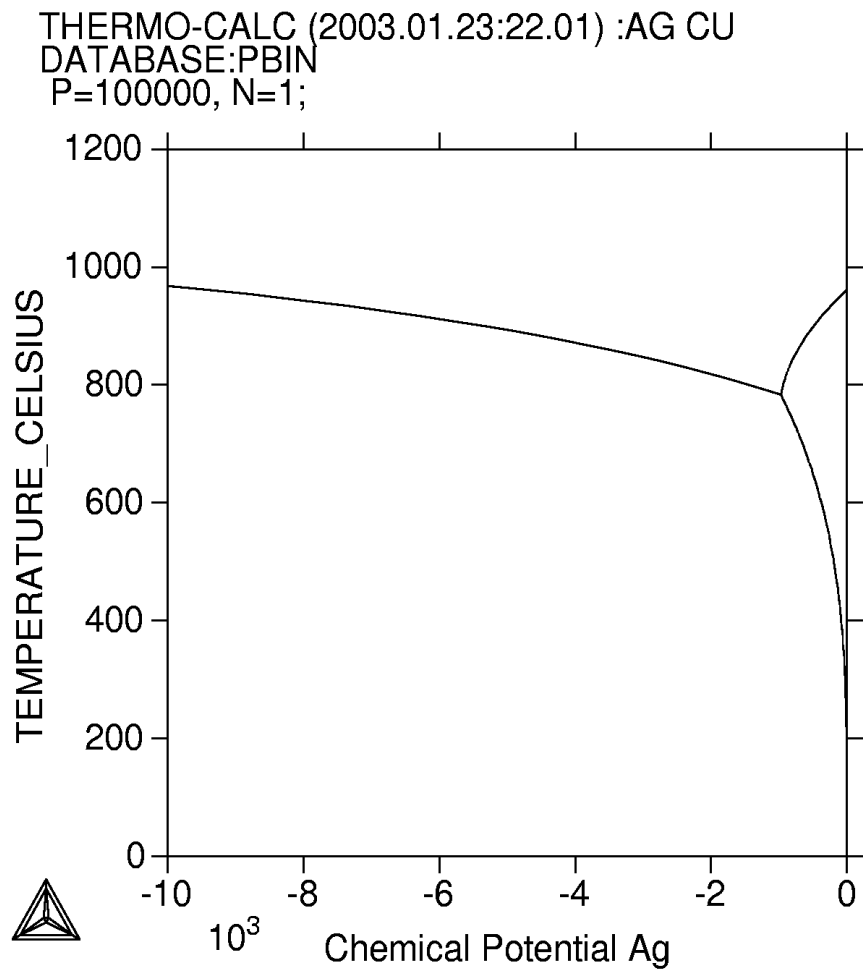
- Two potentials
- One potential
- No potential (two thermodynamic functions)



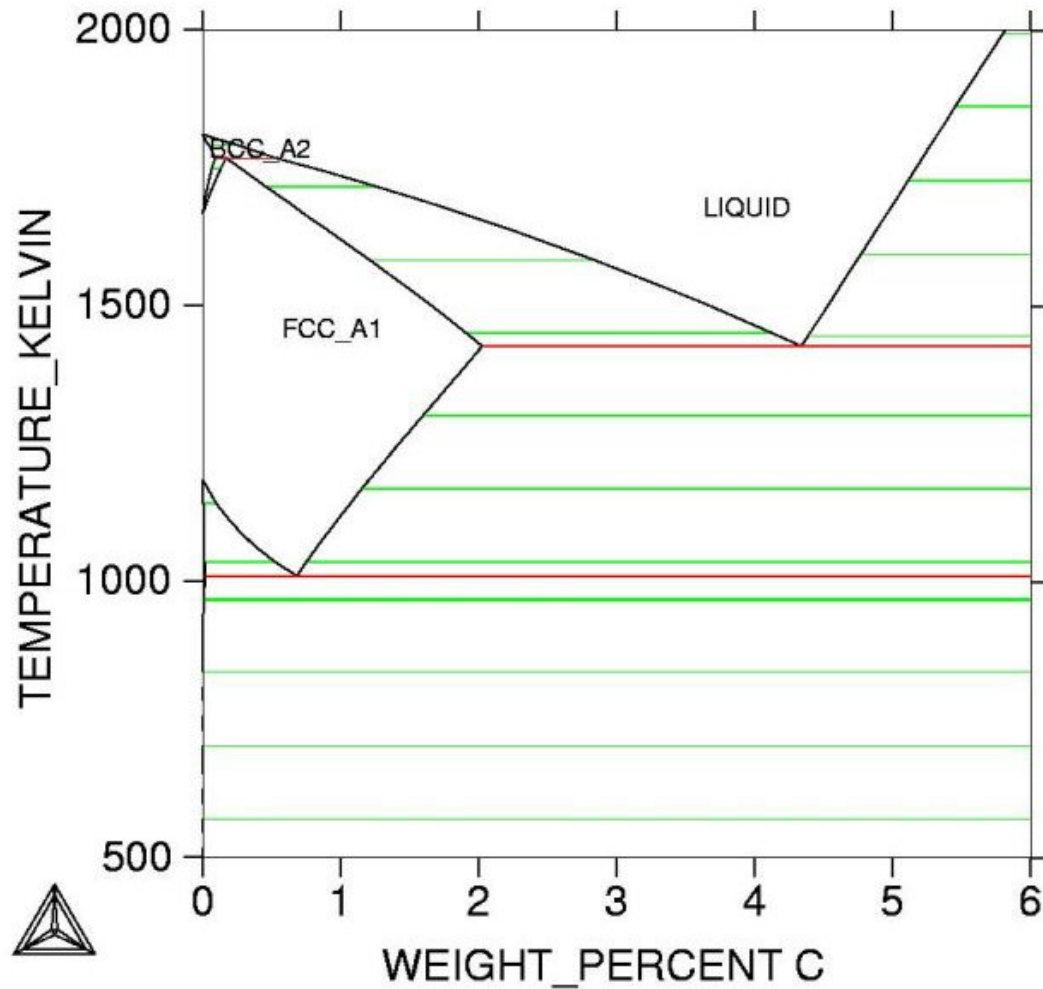
Equilibrium in Fe-C



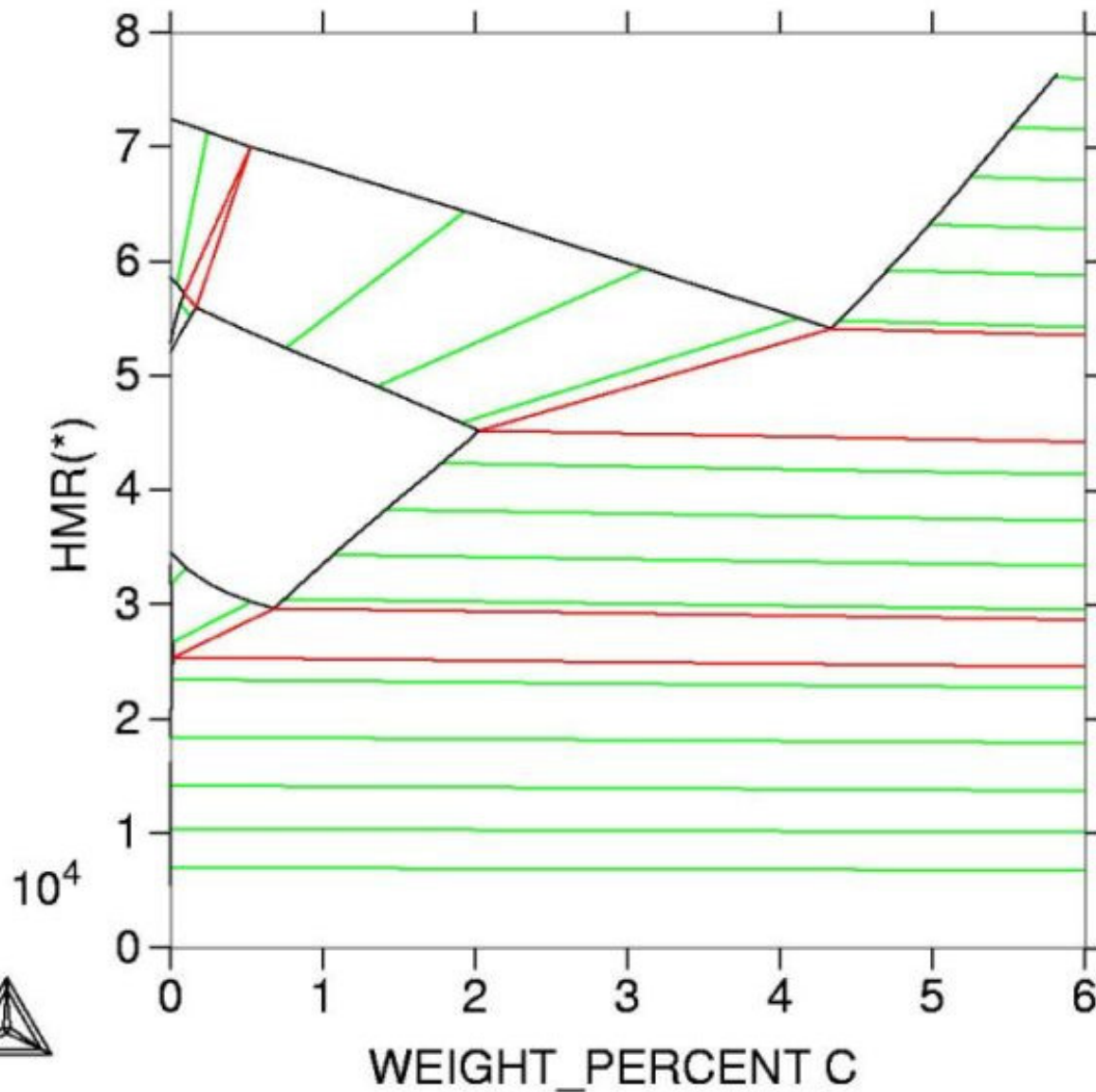
Equilibrium in Ag-Cu



T (potential) vs %C (non-potential)



Enthaply vs Composition (no potential)



Complexity (1 to n)

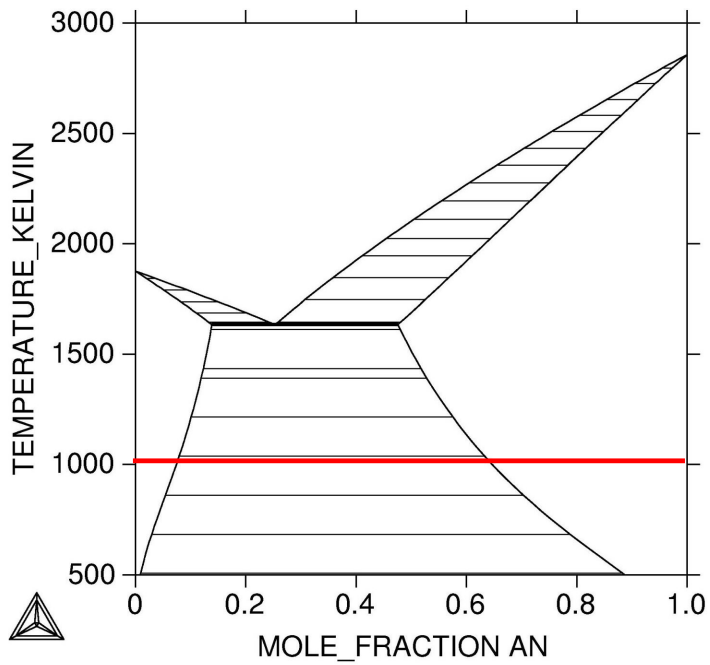
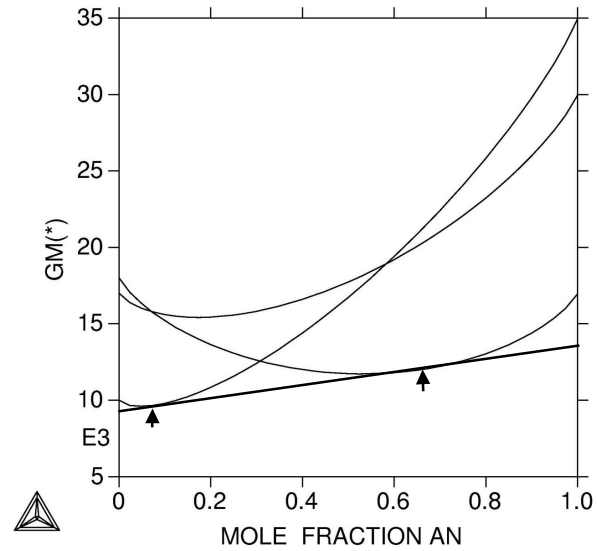
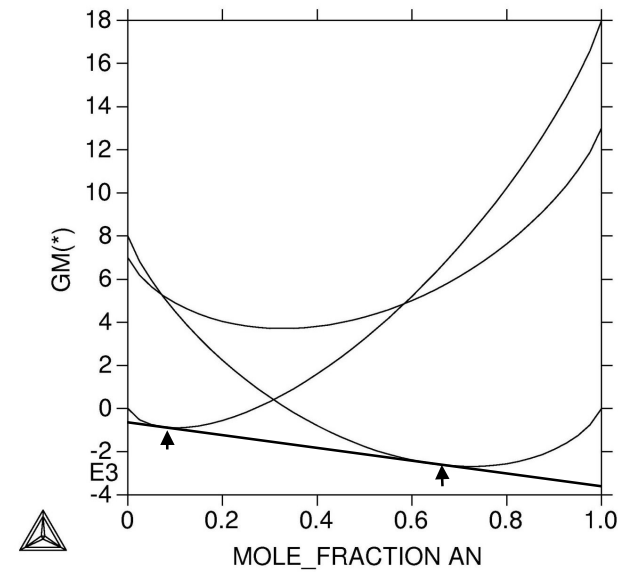


diagrama.tcm



[hipo1](#)



[hipo](#)

